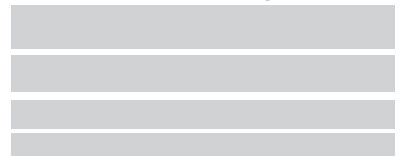


**KNECHT Foundation Slab
Constructional and
Functional Specifications
B/01/2005/E**



**Quality you can build on –
the sure foundation for your house!**

KNECHT
Betonwerke · Fertigteilkeller



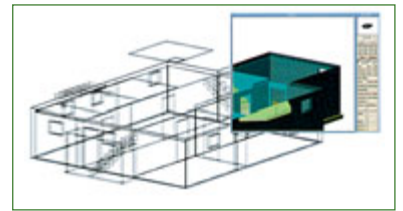
KNECHT Foundation Slab Constructional and Functional Specifications B/01/2005/E

Statics

The statics for the foundation slab are prepared in a verifiable form in accordance with the KNECHT system.

Planning

The reinforcement plans are prepared for the foundation slab.



Expert site management

KNECHT has all services contractually specified with KNECHT monitored by a qualified expert site manager. Together with the client, a site inspection is performed prior to the construction works' commencement. If desired, the company commissioned by the client is instructed on the earthworks. The expert site manager discusses all important aspects of the building permission procedure, including the base height and the excavation depth, with the client. The expert site manager or the mounting manager accepts the contractually agreed KNECHT services together with the client.

Construction site equipment

The construction site equipment comprises the provision of all necessary tools, devices, machines and form materials for the duration of the foundation plate's construction time.

Batter board

Serving as a basis for the true-to-size construction of the KNECHT foundation slab, the batter board is erected in a foundation bed prepared by the client. A measurement of the building is not included.

Earthworks for the drainage lines

In order to lay the house drainage lines, the earthworks are carried out under the foundation slab to a depth of 40 cm below the upper edge of the foundation slab. Refilling is done using the available excavated material, if suitable.

House drainage lines

Below the foundation slab the underground pipes for the house drainage are laid in an incline to before the outer edge of the foundation slab. Up to 3 connections are provided. Quality-inspected plastic pipes and fittings with a nominal diameter of 100 mm are used.

Connection ducts

According to KNECHT's specifications, the pipes end in special connection ducts. These KNECHT connection ducts are an in-house development, and enable problem-free connection of house piping from the ground floor to the house drainage lines.



Foil as separating layer

Beneath the foundation slab, a foil is laid out as separating layer.



Grounding rod according to VDE regulations

A galvanized grounding strap is inserted in the foundation slab as an equipotential bonding conductor, including all connections, with a connection lug.

Strip foundations

The circumferential, unreinforced strip foundations of site-mixed concrete are installed at a frost-free depth. The depth is approx. 80 cm from the upper edge of the foundation bed; the width is approx. 40 - 50 cm.

KNECHT Foundation Slab Constructional and Functional Specifications B/01/2005/E

Reinforced concrete foundation slab

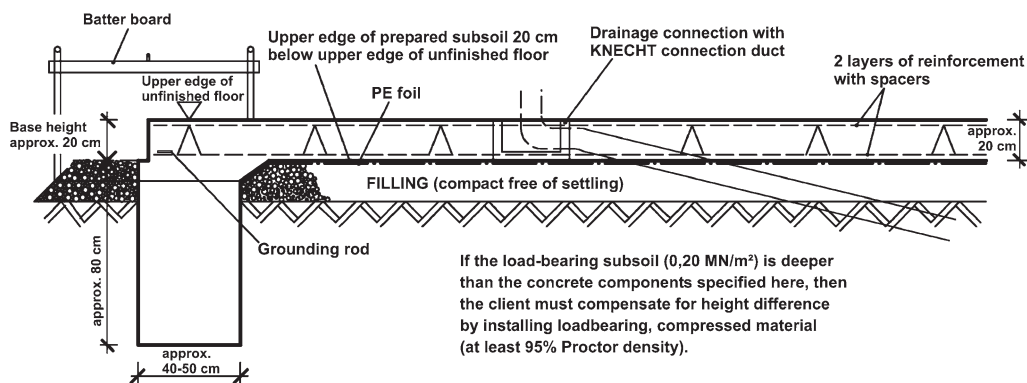
The reinforced foundation slab is made from site-mixed concrete in the stability class C 25/30. It is executed in a thickness of approx. 20 cm. It contains up to 10 kg steel per m² as basic reinforcement. At KNECHT's option it may also be executed in fibre reinforced concrete.

Base height

The base height is approx. 20 cm from the upper edge of the foundation bed.

The surface being built on is _____ m²

Standard construction for the KNECHT foundation slab (Standard detail 40.9)



Notes on the KNECHT foundation slab and additional services which are not contained in these constructional and functional specifications or which are provided by the client:

For your foundation slab's construction, the specification contents serving as the basis of pricing (price list, quotation or contract) are authoritative in connection with these constructional and functional specifications.

1. Constructional notes:

These constructional and functional specifications are only valid in connection with the present quotation plan. Any services deviating from these specifications or requirements of individual federal states in the form of official directives or with regard to structural engineering inspection are not considered herein. If the local soil conditions deviate from the named values, additional measures must be taken. This also applies to construction works in earthquake regions, mining subsidence regions, and the presence of quicksand or groundwater. Topsoil removal, excavation down to load-bearing subsoil, creation of the foundation bed through filling, and compaction free of settling with suitable capillary breaking material and excavation of the strip foundations must be provided by the client. The maximum permissible dimensional tolerance is +/- 2 cm.

Any required services which are not ordered from KNECHT are carried out by the client himself or commissioned by the client. We expressly reserve the right to implement technical and constructional modifications which serve the advancement and improvement of our services.

2. We would be pleased to prepare an individual offer for the following services for you:

Earthworks: Preparation of service specifications with which you can independently effect the commissioning and execution of the earthworks. As an additional service, we offer the complete commissioning of the earthworks in your name and on your behalf. This includes the solicitation of offers from earthwork companies, the placement of the order and the verification of the respective invoice for you in addition to the service specifications.

We furthermore offer the following: Rain drainage, drainage with flushing ducts, uncovering and closing of recesses and openings, supply and disposal lines (for power, gas, water, telecommunications, consideration of insulation plates under the foundation slab and in the area of the base, expansion for bays and conservatories, elevated bases, subsidences in the area of the foundation slab, measures resulting from the properties of the foundation soil, etc.

Any previous constructional and functional specifications for KNECHT foundation slabs become invalid with this new edition.

City, date

Signature(s) of client(s)

Name and address of the agent

KNECHT: A strong partner – professional, experienced, innovative!

KNECHT advantages

- **Constructional and functional specifications**
Transparent clarity in word and image
- **Germany-wide presence**
Sites and plants throughout Germany
- **Internationally active**
e. g. in Austria, Luxembourg, France and Switzerland
- **Statics and site management**
by experienced KNECHT experts for your cellar
- **KNECHT system solutions**
 - GeoTech systems** for improved safety also on difficult foundation soil
 - HydroTech systems** – efficient solutions for the problems of ground moisture, seepage water, groundwater and pressing water
 - ThermoTech systems** – high-performance insulation technology for all requirements
- **First-class logistics**
Modern corporate structures, efficient teamwork from the planning to the completion
- **Warranty PLUS**
The proven KNECHT performance guarantee is the safety plus for all construction services
- **More than 35 years of experience**
Profit from our experience gained from the construction of more than 30,000 cellars
- **Innovative strength**
Always at the pulse of time – with new product ideas and patents

Over generations, KNECHT has been building for generations!

Otto Knecht GmbH & Co. KG Betonwerke – Fertigteilkeller

Main Administration/Central Sales
Ziegeleistrasse 10, 72555 Metzingen,
Germany
Phone +49 7123 / 944-209
Fax +49 7123 / 944-217

Biertal II, 56249 Herschbach
Germany
Phone +49 2626 / 9765-0
Fax +49 2626 / 9765-90

KNECHT
Betonwerke · Fertigteilkeller

Knecht Beton- und Montagebau GmbH

OT Sora, Dorfstrasse 5 k
01665 Klipphausen
Germany
Phone +49 35204 / 4030-4
Fax +49 35204 / 4030-5

OT Geltow, Am Pappeltor 3
14548 Schwielowsee
Germany
Phone +49 3327 / 58108-0
Fax +49 3327 / 58108-6

Further plants:
Schorndorf/Stuttgart
Oranienbaum/Dessau

info@knecht.de
www.knecht.de

